



FINE EQUIPMENTS

www.fineequipment.net



FMG SERIES

BSIV

STRENGTH YOU CAN TRUST

ABOUT FINE



FINE EQUIPMENTS INDIA PVT. LTD.

Founded in 2002, Fine Equipments has risen to prominence as a leading provider in the infrastructure equipment industry in India. Renowned for delivering unparalleled value, Fine Equipments strikes the perfect balance between high power, low maintenance costs, reliability, and profitability.

Our dedication to excellence is reflected in the design and production of our products, incorporating state-of-the-art technologies.

Backed by a robust pan-India dealer network, our equipment benefits from the expertise of qualified sales and service professionals, ensuring the ready availability of FINE Genuine Spares. This strategic network enables us to provide support for our products even in the most remote locations with ease.

As we stride towards becoming a global player, Fine Equipments is dedicated to meeting international standards for product quality, competitive pricing, and specifications that resonate worldwide.

we aim to amplify our market potential by continually introducing new innovations and adding value to our existing offerings.

FUEL - EFFICIENT ENGINE

KEY FEATURES:

- Robust & Rugged – Sturdy in construction, tough & resilient
- Compact & Durable – Heavy Duty
- Ever evolving technology – Latest Know-how's & Continuous product improvement
- Reliability – Well grounded , Dependable & Consistent performance
- Abreast with latest emission norms – BSIV
- Compact Design – Higher Power to weight ratio
- Wide Aftermarket Support – PAN India Service Network & Immediate customer support



RELIABLE STRUCTURE

Wide stance blade lift cylinders provide the most stable grading platform in the industry. The hydraulic motor coupled to the drive circle turn system results in the precise instantly responsive earthmoving tool. It also provides high strength to hold or turn the moldboard smoothly while negotiating maximum loads. This helps in more accuracy and performance resulting into single pass finishes, which make FMG 180 contribute significantly to productivity and cost saving.

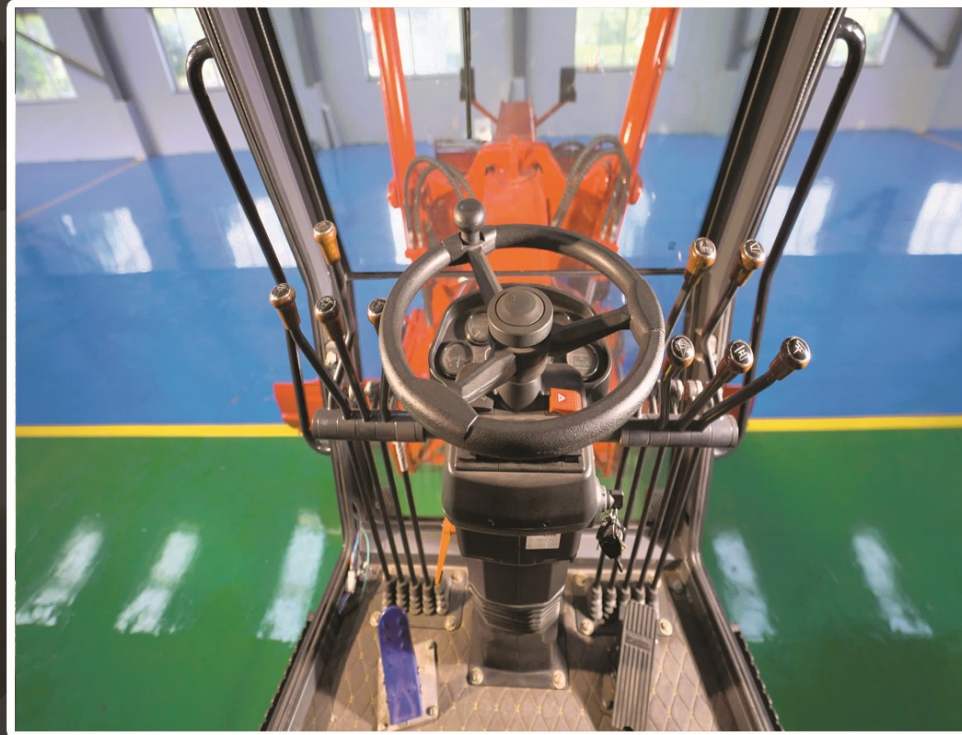


FMG CABIN

Fine operator friendly cab AC cabin User friendly design includes low effort, short throw levers adjustable pedestal, with familiar industry standard operating comforts. Operator compartment lives up to every expectations of A FINE CAB with industry leading comfort safety and efficiency. Unobstructed wide angle views in the front and reverse which reduce operator fatigue, increase productivity & Maximize Safety.

It is Ergonomically designed to give best operating conditions.

- Air Conditioned.
- More Comfortable.
- More glass area for more visibility.



Best Visibility with AC Cabin



Adjustable seat & Steering

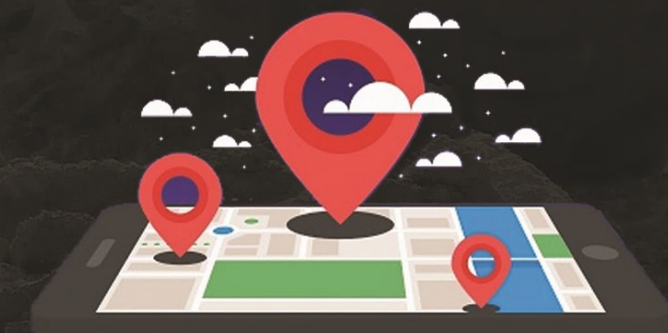


Clear operation Symbols



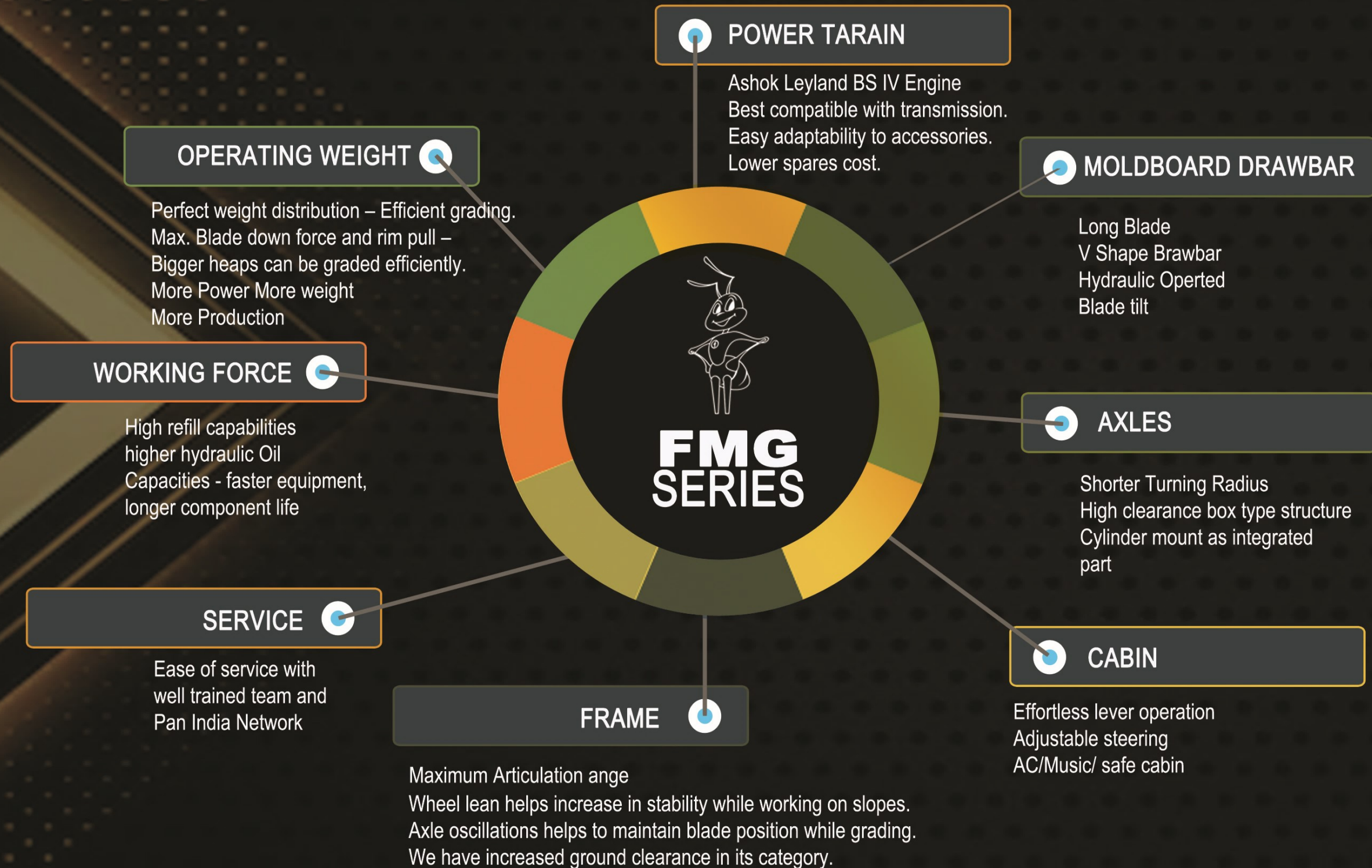
Rear View Camera

TRACKING SYSTEM MOBILE ACCESS*





SPECIFICATIONS THAT POWERS YOUR MACHINE



SPECIFICATION

FMG 130

ENGINE	Make	Ashok Leyland
	Model	H4C413022 - BSIV
	Aspirations	Turbo Charged
	Gross power	130 hp @ 2200 rpm
	Torque	480 Nm @ 1800 rpm

TRANSMISSION	Transmission model	Belian
	Max. travel speed (F)	40 km/hr
	Max. travel speed (R)	30 km/hr
	No. of speeds Forward	2 + Power Mode
	No. of speeds Reverse	2
Electrical battery rating	12 V. 125 AH	

AXLE	Front	Non Driven, steerable, central Pivoted
	Middle	Driven, Non steerable, central Pivoted
	Rear	Driven, Non steerable, central Pivoted ± 5° Oscillation Angle

MOLDBOARD	Moldboard Length	3360 mm
	Moldboard Thickness	16 mm
	Moldboard Height	510 mm
	Mold Board	360°(Angle of revolution)
	Rotating Degree of Mold Board	360°(Angle of revolution)
	Circle drive	close type, worm wheel & pinion

Blade Side Shift (L/R)	515 mm
Blade Tilt Angle (L/R)	35°
Blade Pitch Angle	Forward- 35° Backward 5°
Blade Lifting Height	400 mm
Blade Cutting Depth	350 mm

DOZER	Dozer Height	975 mm
	Dozer Width	16 mm
	Dozer Height above ground	435 mm

STEERING

Type	Power Steering
Valve	Load sensing with Priority Valve

BRAKES

Service brake type	Disc (Foot Operated)
Service brake actuation	Hydraulic Air assisted
Parking brake type	Disk Brake Mounted on transmission drive shaft Mechanically Operated

HYDRAULIC SYSTEM

Main pump type	Fixed Displacement Gear Pump
Max. pump flow rate	60 L/min
Max. working pressure	200 bar
Other Fetures	Load holding with pressure relief valves for lift and sensing cylinder

SERVICE CAPACITES

Fuel tank	200 L
Engine Oil	13 L
Engine Coolant	20 L
Hydraulic Tank	130 L
Transmission	15 L
Middle Axle (Differential)	5 L
Final drive (Rear Axle)	5 L

PRODUCTIVITY EVERYWHERE

OPERATING WEIGHTS

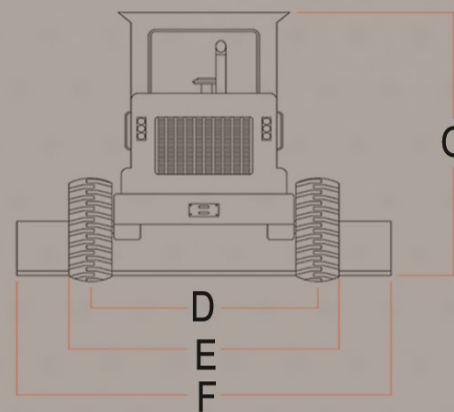
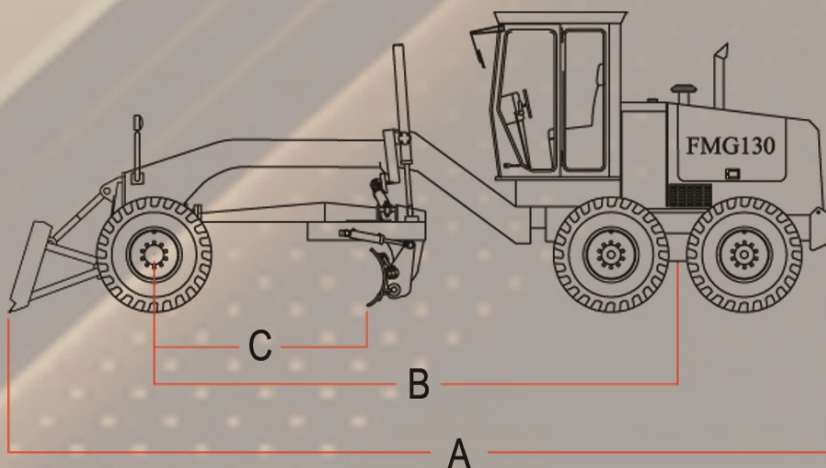
Operating weight	9100kg*
On front axle	2500 kg
On rear axle	6600 kg

TYRES

Tyre size	16./ 70 x 24 16 PR
-----------	--------------------

DIMENSION (mm)

A- Over all length	8700
B- Wheel base	5400
C- Mold board base	2100
D- Width front tyre centre line	1660
E- Width outside tyre	2066
F- Mold board standard width	3360
G- Over all height with cab	2940



ERGONOMICALLY DESIGNED AC CABIN

Better visibility with rear view camera
Adjustable stering Couolumn
Comfortable and adjustable seat

SPECIFICATION

FMG 180

ENGINE	Make	Ashok Leyland BSIV
	Model	H6C418022
	Aspirations	Turbo Charged
	Gross power	180 hp @ 2200 rpm
	Torque	700 Nm @ 1400-1700 rpm

TRANSMISSION	Transmission model	YD 13 (Power Shift Electronically Controlled)
	Max. travel speed (F)	44.9 km/hr
	Max. travel speed (R)	30.55 km/hr
	No. of speeds Forward	6
	No. of speeds Reverse	3

AXLE	Differential type	NO-SPIN Differential
	Final drive type	CHAIN DRIVE
	Wheel lean angle	±17 Degree
	Front angle oscillation	±15°
	Rear axle oscillation	±15°

MOLD BOARD	Mold board Tilt Angle	+ 13° - 45°
	Mold board Lift above ground	400 mm
	Max. slope angle	L / R 90°
	Blade max. depth in ground	500mm
	Circle diameter	1455mm
	Circle thickness	140mm
	Rotating Degree of Mold Board	360°(Angle of revolution)
Circle turn system	Covered	

STEERING	Steering configuration	Full hydraulic steering
	Steering relief pressure	15±1MPa
	Steering pump type	GEAR PUMP
	Minimum turning radius	7.5m
	Steering angle (Front Wheel)	±45°
Frame articulation angle	±20°	

BRAKES

Service brake type	Disc (Front)
Service brake actuation	Hydraulic
Parking brake type	Hub Brake
	Mechanically Operated
Parking brake actuation	Drum Brake

HYDRAULIC SYSTEM

Main pump type	Dual Pump
Main relief pressure	16±0.5MPa
Pump flow	70L/min

SERVICE CAPACITIES

Fuel tank	280L
Crank case	20L
Cooling system	30L
Hydraulic system	130L
Transmission & Torque convertor	28L
Tandem (Each Side)	23L
Final drive (Rear Axle)	28L

WORKING CAPACITIES

Maximum Draw pull	72kN
Cutting pressure	70KN

ERGONOMICALLY DESIGNED AC CABIN

- Better visibility with rear view camera
- Adjustable steering Column
- Comfortable and adjustable seat

THE ULTIMATE PERFORMER

OPERATING WEIGHTS

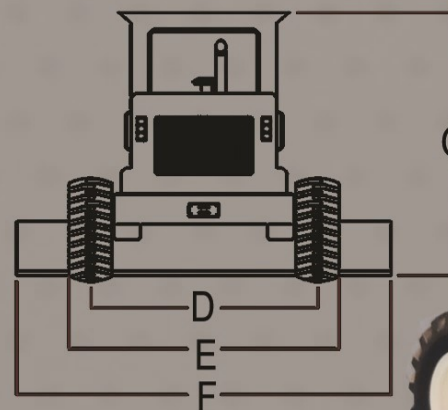
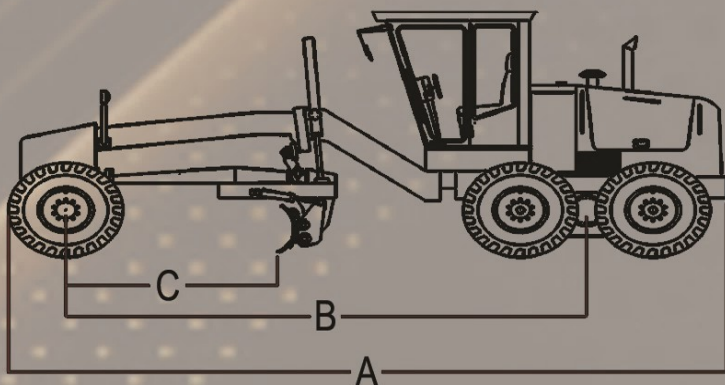
Operating weight	14500 kg
On front axle	4500 kg
On rear axle	10000 kg

TYRES

Tyre size	17.5-25 16PR
-----------	--------------

DIMENSION (mm)

A- Over all length	8500
B- Wheel base	5985
C- Mold board base	2380
D- Width front tyre centre line	2150
E- Width outside tyre	2600
F- Mold board standard width	3660
G- Over all height with cab	3400



FMG SERIES

FINE Product Development team has utilized extensive consumer insight and feedback to develop this product which is built to withstand India's rough terrain and heavy usage. In addition, the product offers all the relevant features using the latest vehicle systems and technologies at competitive prices.

**DOMINANT
MODERN
POWERFUL**



**FINE EQUIPMENTS
INDIA PRIVATE LTD.**

Fine Centre, Behind Shroff's Srushti,
Off Mumbai - Bangalore Highway,
Mhalunge, Pune 411045. INDIA.

Mob: +91 93264 39921

Mob: +91 83082 88600

Email: info@fineequipment.net

Web: www.fineequipmet.net

