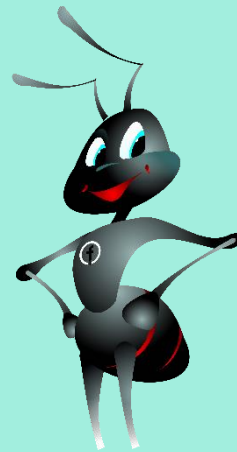


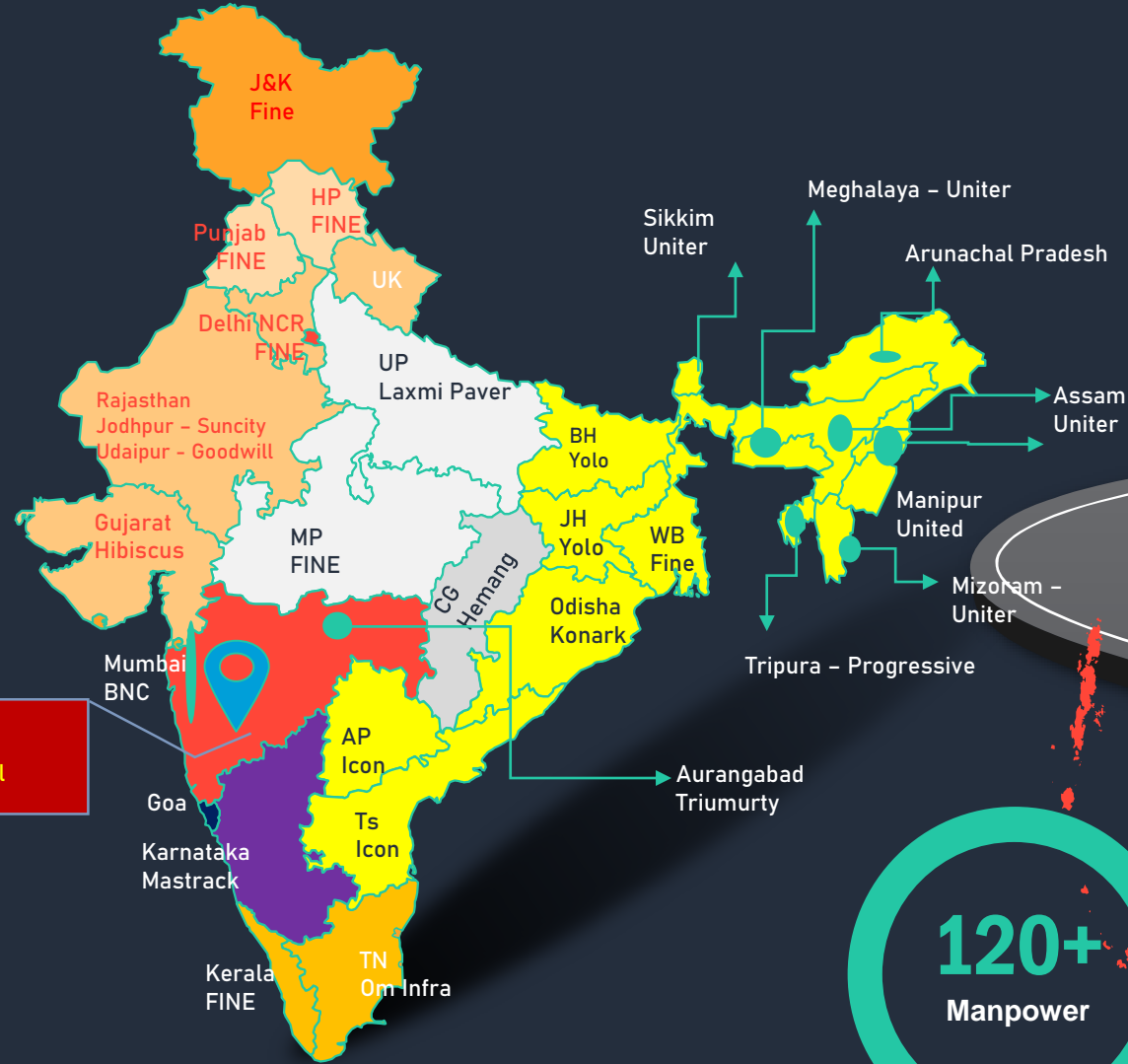


FINE EQUIPMENTS INDIA PVT LTD
STRENGTH YOU CAN TRUST

www.fineequipment.net



FINE NETWORK



FINE EQUIPMENTS INDIA PVT LTD.

Founded in 2002, Fine Equipments has risen to prominence as a leading provider in the infrastructure equipment industry in India. Renowned for delivering unparalleled value, Fine Equipments strikes the perfect balance between high power, low maintenance costs, reliability, and profitability. Our dedication to excellence is reflected in the design and production of our products, incorporating state-of-the-art technologies. Boasting one of the largest installations of rock breakers in India and an expanding global presence, Fine Equipments is distinguished by advanced features and modern technologies, making our products the preferred choice for customers.

24+
Dealer

5+
Branch

120+
Manpower





Product Range

Equipment Division



www.fineequipment.net

STRENGTH YOU CAN TRUST

Excavator Attachments



ROCK Breaker

QUICK COUPLER



DRUM COMPACTOR



PILE DRIVER



ROCK DRILL



DRUM CUTTER



GRAB





FINE ROCK BREAKER

Fine Rock Breaker is one of India's largest selling hydraulic rock breaker brand. It has carved a niche for itself as the highest value for money in the rock breaker market. We offer rock breakers as per the choice and need of hirers as well as contractors.

We have successfully crossed the mark of over 10,000+ units of rock breakers in India. When it comes to breakers, our brand Fine is always the customer's first choice.

RANGING FROM 3- 80 TON CLASS

FEATURES:

- Auto Stop Valve
- Anti Blank Fire
- Rigid Accumulator
- Hardox Plate
- Proper Weight
- High Output – High Profits
- High Strength And Durability – Low Maintenance
- High Reliability – Faster Project Completion
- More Fuel Efficient – Save Money

FINE ROCK BREAKER

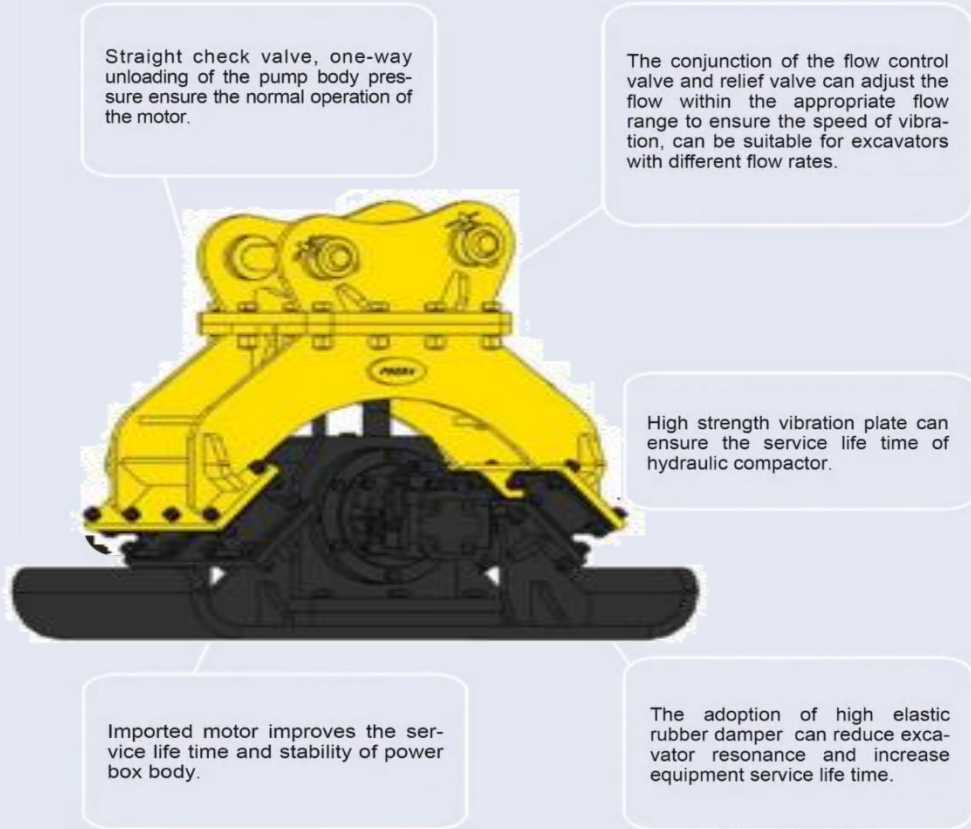


		FINE 3 X	FINE 6 X	FINE 12 X	FINE 23 X Plus	FINE 37 X	FINE 46 X	FINE 65 X	FINE 80 X
Operating Weight	kg	144	405	920	1760	2350	3314	4100	6300
Overall Height (with bracket)	mm	1271	1870	2400	2707	3100	3612	3775	4200
Operating Pressure	bar	80 - 110	90 - 130	150 - 180	160 - 180	160 - 180	160 - 180	150 - 180	180 - 210
Required Oil Flow	lpm	20 - 30	45 - 90	90 - 120	150 - 180	180 - 220	190 - 250	250 - 350	300 - 400
Impact Rate	bpm	600 - 1000	400 - 800	400 - 900	350 - 550	300 - 500	300 - 500	200 - 400	180 - 350
Tool Diameter	mm	45	72	110	140	155	165	180	200
Suitable Base Machine	ton	1.5 - 4	5 - 8	10-14	18 - 28	30 - 38	40 - 49	50 - 65	65 - 85

Due to constant product upgradation specifications are subject to change without prior notice.

SLOPE PLATE COMPACTOR

FINE Hydraulic compactors offer superior compaction performance in difficult-to-reach areas, such as pipeline trenches and steep slopes. Their ability to handle thicker soil layers makes them a valuable asset for various construction projects.



Description	PLATE Compactor	
Model	FIPC 1000	FIPC 1200
Height(mm)	700 mm	750 MM
Length (mm)	1000 mm	1200 MM
WIDTH (mm)	670 mm	800 MM
Weight (KG)	600 kg	800 Kgs
IMPULSE FORCE	5000 KG	6000 KG
FLOW RANGE	50 TO 90 LPM	50 TO 100 LPM
VIBRATIONS	2000 RPM	2000 RPM

Experience the power and flexibility of our Excavator Plate Compactor. This innovative attachment combines the strength of an excavator with the precision of a plate compactor. Handle a wide range of compaction tasks with ease.

GRAPPLE

The design of large capacity cylinders with a hydraulic balance system ensures the durability of grabbing.

The imported motors and high quality rotary mechanism improve the lifetime of rotary device, the stability of system and can 360°degrees rotate freely.

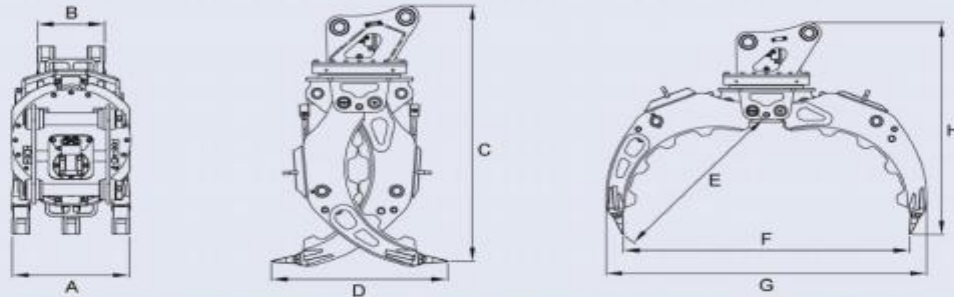
The motor adopts double-balance control hydraulic system design to reduce the impact on the moter.

A variety of different functions of the teeth can be applied to different grabbing working conditions.



To use imported HARDOX wear-resistant steel, with light weight, high strength, strong wear resistance.

Outline Dimension



Specifications

fi FGW(S)03

fi FGW(S)04

fi FGW(S)06

Outline Dimension	A	420 mm	420 mm	550 mm
	B	240 mm	240 mm	320 mm
	C	1270 mm	1250 mm	1730 mm
	D	680 mm	695 mm	735 mm
	E	886 mm	916 mm	1115 mm
	F	1300 mm	1400 mm	1800 mm
	G	1410 mm	1520 mm	1950 mm
	H	1175 mm	1145 mm	1525 mm
Max Opening Width		1300 mm	1400 mm	1800 mm
Total Weight		350 kg	390 kg	740 kg
Closing Working Pressure		110~140 kg/cm ²	120~160 kg/cm ²	150~170 kg/cm ²
Closing Working Flow		30~55 lpm	50~100 lpm	90~110 lpm
Rotating Working Pressure		60~90 kg/cm ²	60~90 kg/cm ²	140~160 kg/cm ²
Rotating Working Flow		30~50 lpm	30~50 lpm	30~50 lpm
Unload Weight		1500 kg	2000 kg	3000 kg
Suitable Carrier		4-6 ton	7-11 ton	12-16 ton

Specifications

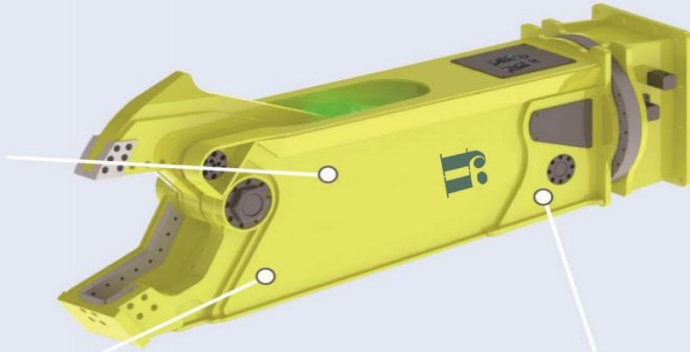
fi FGW(S)08

fi FGW(S)10

Outline Dimension	A	660 mm	750 mm
	B	380 mm	420 mm
	C	2110 mm	2230 mm
	D	1240 mm	1325 mm
	E	1500 mm	1595 mm
	F	2300 mm	2500 mm
	G	2470 mm	2790 mm
	H	1920 mm	2095 mm
Max Opening Width		2300 mm	2500 mm
Total Weight		1380 kg	1700 kg
Closing Working Pressure		160~180 kg/cm ²	160~180 kg/cm ²
Closing Working Flow		100~140 lpm	130~170 lpm
Rotating Working Pressure		140~160 kg/cm ²	140~160 kg/cm ²
Rotating Working Flow		40~60 lpm	40~60 lpm
Unload Weight		5000 kg	8000 kg
Suitable Carrier		17-23 ton	24-30 ton

EAGLE SHEER

The design of builtin motor and the separate connection structure can not only protect the motor, but also make the product suit to various excavators and other carriers.



The design of box structure makes working weight lighter and strength higher.

The specially designed oil separator and flow control valve guarantee the stability of whole hydraulic system.

Cutting Capacity

Type	Symbol	FCS15	FCS20	FCS30
Round Steel	●	50 mm	60 mm	70 mm
Pipe	○	244*9	265*9	380*9.5
Steel Plate	—	10 mm	12 mm	16 mm
Square Steel	■	50 mm	55 mm	65 mm
I Type Steel	⌒	28b	36c	45c
H Type Steel	⌒	HM-244×175×7×11×13	HM-340×250×9×14×13	HM-390×300×10×16×13

Specifications

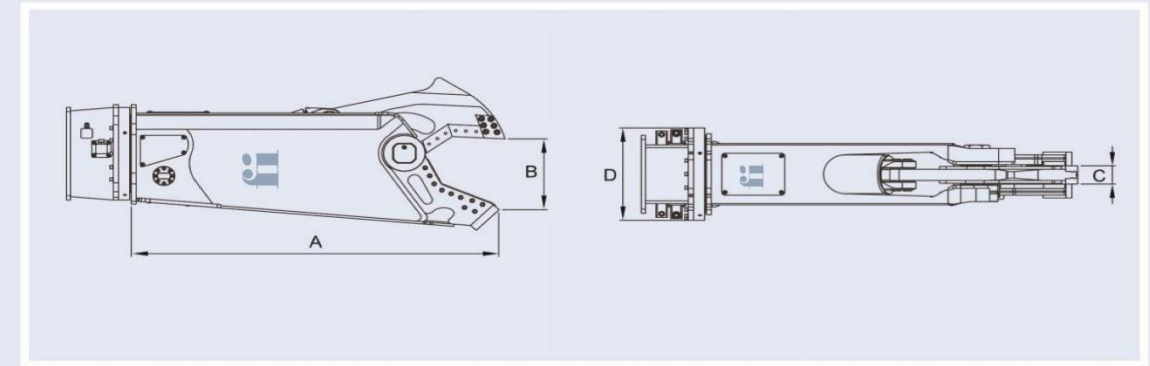
FCS15

FCS20

FCS30

Outline Dimension	A	1970 mm	2276 mm	2552 mm
	B	470 mm	560 mm	656 mm
	C	112 mm	130 mm	142 mm
	D	716 mm	662 mm	732 mm
Weight		1560 kg	2060 kg	2700 kg
Shearing Working Pressure		280-300 kg/cm ²	300-350 kg/cm ²	300-350 kg/cm ²
Shearing Working Flow		160-240 lpm	200-300 lpm	200-300 lpm
Rotary Working Pressure		60-90 kg/cm ²	140-160 kg/cm ²	140-160 kg/cm ²
Rotary Oil Flow		20-30 lpm	30-50 lpm	30-50 lpm
Shearing Oil Port		G1/2"	G1"	G1"
Rotary Oil Port		G3/8"	G3/8"	G3/8"
Suitable Carrier		10-16 ton	17-24 ton	25-35 ton
Working Mode		Motor driving, 360° free rotation		

Outline Dimension



40

HYDRAULIC PULVERIZER

The special flow control system with an accelerating valve not only improves the closing speed under low load, but also increases the shear and breaking force under high load.

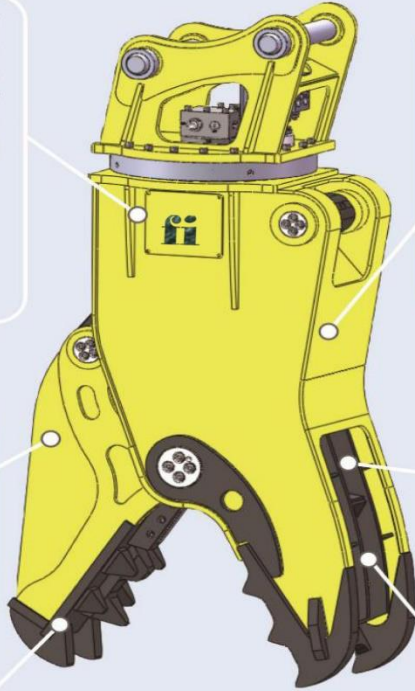
The ultra high pressure hydraulic cylinder: The cylinder part adopts alloy forging and advanced heat treatment technology, and the compressive strength can reach 60MPa.

The special welding process of steel plate greatly improves the welding quality of the jaws.

Diversified design of jaw plates maximize crushing.

The jaw blade can be replaced and reversed at any based on an independent installation design, and the special fixing method can make the blade easily removed and also guarantee the cutting strength.

The movable jaw plate and fixed jaw plate are made of imported HARDOX steel, so the jaw plates are with light weight, high strength and strong wear resistance.

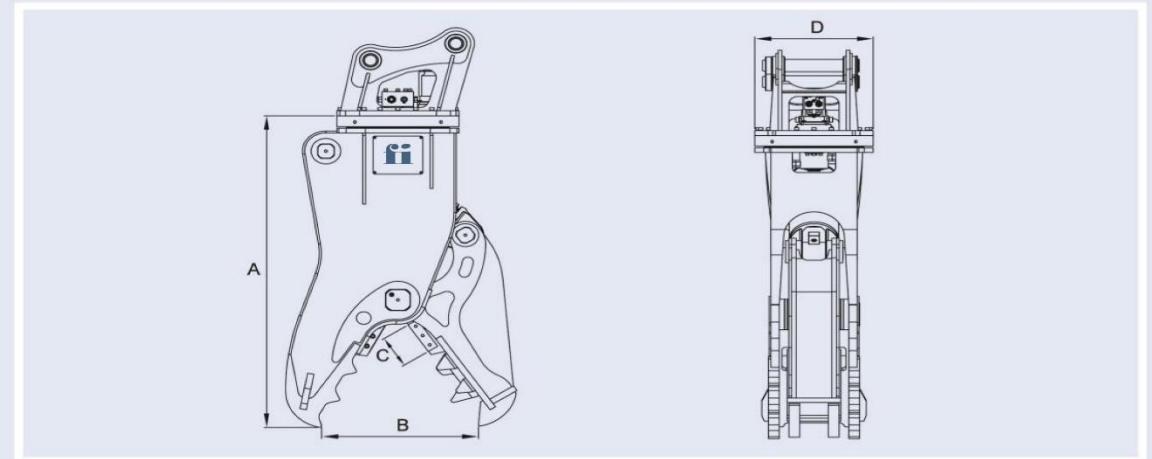


Specifications

fi FRP20

Outline Dimension	A	850 mm
	B	200 mm
	C	1980 mm
	D	662 mm
Opening Width		850 mm
Total Weight		2020 kg
Cutting Force (average)		2720 kN
Smash force (end)		800 kN
Closing Working Pressure		300-350 kg/cm ²
Closing Working Flow		180-240 lpm
Rotating Working Pressure		140-160 kg/cm ²
Rotating Working Flow		60-90 lpm
Suitable Carrier		20-30 ton
Working Mode		Rotary/

Outline Dimension

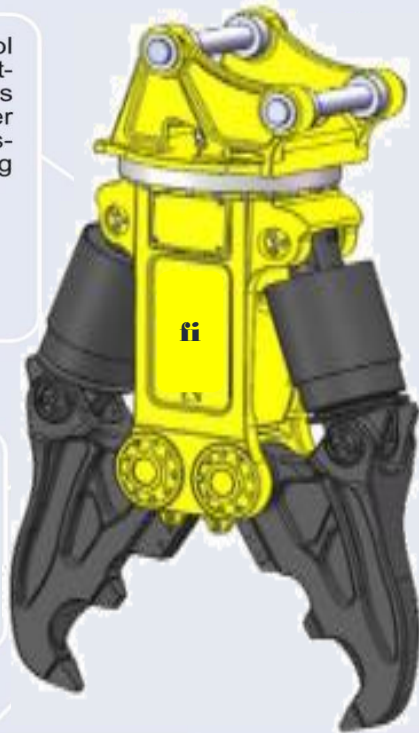


HYDRAULIC PULVERIZER

The special flow control system with an accelerating valve not only improves the closing speed under low load, but also increases the shear and breaking force under high load.

The special welding process of steel plate greatly improves the welding quality of the jaws.

The jaw blade can be replaced and reversed at any based on an independent installation design, and the special fixing method can make the blade easily removed and also guarantee the cutting strength.

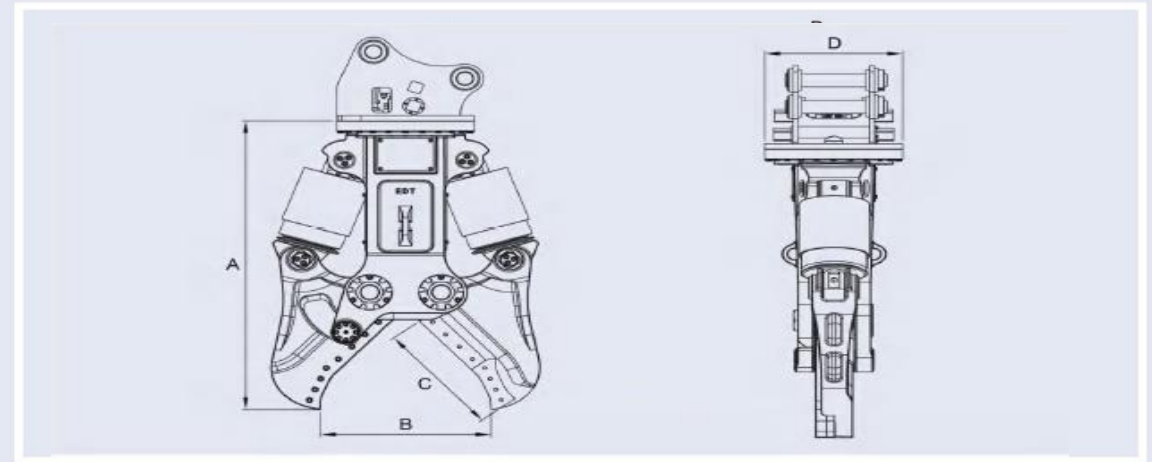


The ultra high pressure hydraulic cylinder: The cylinder part adopts alloy forging and advanced heat treatment technology, and the compressive strength can reach 60MPa.

Diversified design of jaw plates maximize crushing.

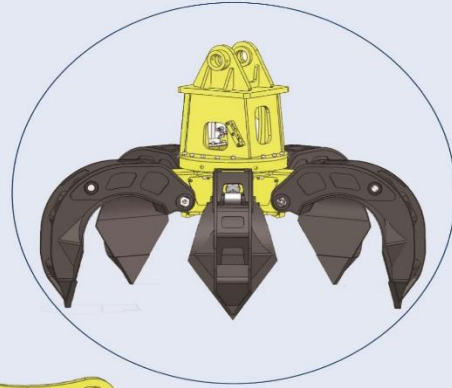
The movable jaw plate and fixed jaw plate are made of imported HARDOX steel, so the jaw plates are with light weight, high strength and strong wear resistance.

Specification	FC10D	FC15D	FC20D	
Outline Dimension	A	1227 mm	1800 mm	2043 mm
	B	620 mm	950 mm	1080 mm
	C	125 mm	185 mm	200 mm
	D	486 mm	662 mm	732 mm
Weight	650 kg	1800 kg	2570 kg	
Shear Working Pressure	200-300 kg/cm ²	300-350 kg/cm ²	300-350 kg/cm ²	
Shear Working Flow	60-120 lpm	140-240 lpm	180-240 lpm	
Rotating Working Pressure	60-90 kg/cm ²	140-160 kg/cm ²	140-160 kg/cm ²	
Rotating Working Flow	30-50 lpm	40-60 lpm	40-60 lpm	
Cutting Oil Port	G3/4"	G1"	G1"	
Rotating Oil Port	G3/8"	G3/8"	G3/8"	
Suitable Carrier	11-16 ton	17-25 ton	26-35 ton	
Working Mode	Mechanical or Hydraulic type			



ORANGE GRAB

H type

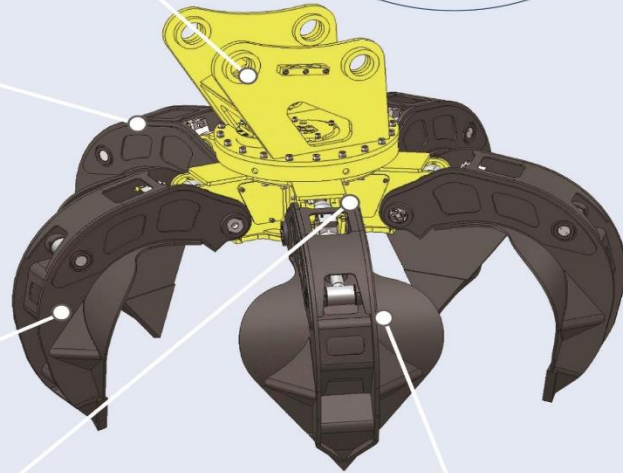


Optimizing the movement of oil cylinder can maximize the grabbing weight within the effective grabbing range and thereby shorten the machine running time, which improves work efficiency.

The design of the claw structure is optimized to realize the minimum weight and maximum grab load at the same level.

The specially designed meshing gear improves the bearing strength of gear, the load distribution during movement, the accuracy and stability of the transmission.

The specially designed oil separator and flow control valve ensures the stability and synchronization of the entire hydraulic system.



The special wear-resistant steel plate welding process not only improves the wear resistance of the claw, but also ensures the overall welding quality.

Specifications

f FOG06H

f FOG08H

f FOG10H

Maximum Opening	1400 mm	1600 mm	1835 mm
Weight	940 kg	1410 kg	1690 kg
Operation Pressure (Closed)	120-160 kg/cm ²	140-180 kg/cm ²	160-200 kg/cm ²
Operation Flow (Closed)	50-100 L/min	80-120 L/min	100-140 L/min
Operation Pressure (Rotating)	80-120 kg/cm ²	80-120 kg/cm ²	80-120 kg/cm ²
Operation Flow (Rotating)	30-50 L/min	30-50 L/min	30-50 L/min
Grab Weight	800 kg	1000 kg	1400 kg
Number of Peels	4	5	5
Suitable Carrier	4-9 ton	10-16 ton	17-24 ton

Specifications

f FOG06

f FOG08

f FOG10

Maximum Opening	1650 mm	1850 mm	2050 mm
Weight	800 kg	1250 kg	1530 kg
Operation Pressure (Closed)	140-180 kg/cm ²	160-200 kg/cm ²	160-200 kg/cm ²
Operation Flow (Closed)	80-120 L/min	100-140 L/min	130-180 L/min
Operation Pressure (Rotating)	80-120 kg/cm ²	80-120 kg/cm ²	80-120 kg/cm ²
Operation Flow (Rotating)	30-50 L/min	30-50 L/min	30-50 L/min
Grab Weight	1100 kg	1500 kg	1700 kg
Number of Peels	5	5	5
Suitable Carrier	10-16 ton	17-24 ton	25-35 ton



FC type claw

For scrap and sand



MO type claw (Steel Scrap Grab)

For gravel and metal scrap



FO type claw

For scrap car frame and stone



FINE DRUM CUTTER

FINE drum cutter is an attachment that features rotating drums fitted with picks arranged around the outer edge. These drums are driven by a hydraulic motor, spinning at several hundred revolutions per minute to effectively cut through rock, concrete, or frozen ground.

PRODUCT SPECIFICATION	FI05RD	FI10RD	FI20RD
Max Power Output	25kW	50kW	95kW
Max Flow	85LPM	150LPM	250LPM
Recommended Flow	40-70LPM	100-150 LPM	120-220 LPM
Pressure	≥205 bar	≥270 bar	≥320 bar
Output Torque	2200Nm @ 320 bar	6500Nm @ 320 bar	145000Nm @ 320 bar
Output Shaft Speed	100 rpm @ 50 LPM	95rpm @ 100 LPM	95rpm @ 200 LPM
Weight	210 Kgs	450 Kgs	950 Kgs
Cutter Bit	28 Pices	40 Pices	48 Pices
Base Carrier class	2.5-6 Ton	8-15 Ton	18-30 Ton



PRODUCT SPECIFICATION	FI05RW	FI10RW	FI15RW	FI20RW
Max Power Output	22kW	45kW	70kW	90kW
Max Flow	65LPM	112LPM	132LPM	320LPM
Recommended Flow	40-60LPM	60-100 LPM	100-150 LPM	150-250 LPM
Pressure	≥400 bar	≥400 bar	≥400 bar	≥450 bar
Output Torque	1575Nm @ 320 bar	3570Nm @ 320 bar	6320Nm @ 320 bar	17840Nm @ 320 bar
Output Shaft Speed	100 rpm @ 50 LPM	90rpm @ 80 LPM	85rpm @ 120 LPM	78rpm @ 220 LPM
Weight	215 Kgs	275 Kgs	595 Kgs	1370 Kgs
Cutter Bit	56 Pices	56 Pices	64 Pices	80 Pices
Base Carrier class	2.5-6 Ton	8-16 Ton	12-18 Ton	18-30 Ton

Applications

FINE Drum cutter attachments for excavators are utilized in various tasks, including Rock Excavation, demolition, underground scaling, tunnel profiling, trenching, and more



SLOPE DRUM COMPACTOR

FINE state-of-the-art Excavator Slope Compactor! Designed for unparalleled performance, FINE compactor effortlessly tackles the toughest slopes, ensuring maximum stability and durability.

Description	Slope Drum Compactor		
Model	FIDC 1000	FIDC 1200	FIDC 2000
Height(mm)	950 mm	1130 MM	1150 MM
Drum Length (mm)	1000 mm	1200 MM	2000 MM
Drum Dia (mm)	655 mm	800 MM	800 Zmm
Weight (KG)	750 kg	1150 Kgs	1900 Kgs
Centrifugal Force (Kn)	80 kn	90kN	120 kN
Working Flow (L/Min)	50 to 80 lpm	55 to 85 lpm	55 to 85 lpm
Area covered for one Revaluation	23 Sq FT/REV	32 Sq Feet/Rev	50 Sq Feet/Rev
Impulse Force (/kgs)	5000 kgs	6000 kgs	7000 kgs
Nominal Amplitude (mm)	0.4 MM	0.5 MM	0.6 mm



Transform your excavator into a slope conquering machine! FINE high-performance slope compactor attachment delivers exceptional compaction results on even the steepest gradients. Experience unmatched efficiency, safety, and productivity.



Small in **SIZE** BIG in **POWER**

Equipped with

- Retractable tracks
- Kubota Engine
- Standard Adaptation Kit
- Bigger bucket capacity
- Maximum reach
- Fuel efficient

ZERO TAIL SWING



Specification	FM 20	FM 38
Operating Performance	Zero Tail Swing	
Operating Weight	2000 kg	3810 kg
Bucket Capacity	0.07	0.12
Bucket Mass	50 kg	118 kg
Bucket No.of Teeth	3 Nos	4 Nos
Max. Arm Digging Force	11 KN	18 KN
Max. Bucket Digging Force	18 KN	30 KN
Traction Speed low	2.4 km/h	2.4 km/h
Traction Speed High	3.6 km/h	4.4 km/h
Engine		
Engine	Kubota D 1105	Kubota D1703
HP/kW	19 hp/14 kW	24.80 hp/18.2kW
RPM	2200	2200
Engine Coolant	8 litre	14 Litre
Engine Oil	5.1 litre	7 litre
Diesel Tank	17 litre	42 litre
Battery-1	12 V	12V
Fuel	Diesel	Diesel
Travel Reduction Gear Oil	self-lubricate	self-lubricate
Hydraulic Pump		
Hydraulic Pump	Piston Pump	Piston Pump
Hydraulic Pump Flow	39.6L/min+8.8L/min	88L/min
Hydraulic Pressure	21.5Mpa	22.5Mpa
Slew Motor	Orbit Type	Slew reducer type
Traction Motor	Piston Pump with reducer	Piston pump with reducer
Hydraulic Oil System Capacity	17 Litre	20.5 Litre
Hydraulic Oil Tank Capacity	18 Litre	40 Litre
Dimensions and Specifications		
Machine Overall Length	3555 mm	4915 mm
Overall Width	990/1300 mm	1755 mm
Overall Height	2350 mm	2525 mm
Axle Base	1230 mm	1670 mm
Minimum Ground Clearance	175 mm	305 mm
Tail Swing Radius	650 mm	860 mm
Overall Width Crawler	990 mm	1755 mm
Arm Length	950 mm	1400 mm
Boom Length	1850 mm	2535 mm
Track Shoe Width	230 mm	350mm
Left Side	62°	50°
Right Side	56°	65°
Max Digging Depth	2400 mm	3208 mm
Max. Height of cutting Edge	3655 mm	4540 mm
Max. Dumping Height	2420 mm	3280 mm
Max. Vertical Digging Depth	2025 mm	2957 mm
Max. Digging Radius	4040 mm	5480 mm
Max. Digging Height	3655 mm	5440 mm
Min. Swing Radius	1610 mm	2125 mm
Dozer Blade	Hydraulic Lifting Type	Hydraulic Lifting Type
Blade Width	990~1300mm	1720 mm
Blade Height	240 mm	350 mm
Blade Cutting Angle	40°	44°
Max dozer Blade Lifting Distance	305 mm	365 mm
Max dozer Blade Cutting Distance	270 mm	385 mm
Cabin Type	Canopy	Ac Cabin

STRENGTHS AND FEATURES

Performance

- Best-in-class bucket breakout force
- Best-in-class dump height
- Class leading dig depth
- Class leading travel speed
- Best-in-class tractive force (drawbar pull)

Durability:

- Heavy-duty dozer blade
- Large pins and bushings
- Thick frames and quality welds
- Large hydraulic cylinders and rods

Class Leading Dig Depth

Outstanding dig depth and excellent reach means you can dig more and reposition less, increasing your productivity.

Hydraulic Cylinders

Cushioned boom, arm, and swing cylinders allow for smooth operation while reducing stress on the frame and other components.

Operator Safety & Comfort

- Best operator's compartment in its class
- low noise operation
- Suspension seat and adjustable arm rests
- Retractable seat belt and travel alarm
- ROPS and FOPS protection

Best in class Dump Height

Allows you to dig and load material with ease. FINE dual pin position bucket provides even more versatility and enables you to adapt the machine's digging characteristics to the task at hand.

Serviceability

- Tilt up operator's platform
- Hinged side and rear panels
- Sectional hoses for boom and blade
- Easy access lubrication points
- 1 year/1000 hour warranty which ever comes earlier

Attachment

- Rock Breaker
- Auger
- Rubber Track / Rubber Track Pads
- Grapple
- all types of bucket etc



FINE MOTOR GRADER

The FINE FMG series is designed to combine the attributes of productivity, operator friendliness, reliability and ease of service in a quality package.

The FMG series is powered with Ashok Leyland which is ideal for this application as it produces the required torque at low engine speeds delivering responsiveness and fuel efficiency. These engines run cleanly without extra service required for additional equipment or after treatment of exhaust gases. The transmission has been selected to optimize the engine performance and enhance overall fuel efficiency by matching engine power to the application. Standard Ac & Friendly cabin give operator Comfort and ease to run machine for longer period.

- **FMG 180**
 - 180 HP Engine
 - 12 Ft Blade
 - Tyres - 17.5-25 16 PR
 - Transmission – YD 13
 - Manual Transmission
- **FMG 130**
 - 130 HP Engine
 - 11 Ft Blade
 - Tyres - 16/70x-24 16 PR
 - Transmission - Belian
 - Automatic Transmission

Powerful Grading in the toughest environment

SPECIFICATION

FMG 130

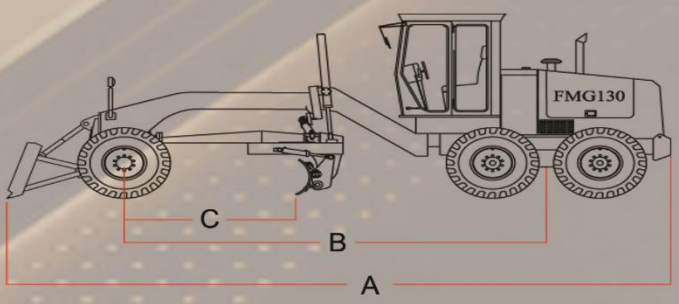
ENGINE	Make	Ashok Leyland
	Model	H4C413022 - BSIV
	Aspirations	Turbo Charged
TRANSMISSION	Gross power	130 hp @ 2200 rpm
	Torque	480 Nm @ 1800 rpm
	Transmission model	Belian
AXLE	Max. travel speed (F)	40 km/hr
	Max. travel speed (R)	30 km/hr
	No. of speeds Forward	2 + Power Mode
	No. of speeds Reverse	2
	Electrical battery rating	12 V. 125 AH
Front	Non Driven, steerable, central Pivoted	
Middle	Driven, Non steerable, central Pivoted	
Rear	Driven, Non steerable, central Pivoted ± 5° Oscillation Angle	

MOLDBOARD	Moldboard Length	3360 mm
	Moldboard Thickness	16 mm
	Moldboard Height	510 mm
	Mold Board	360°(Angle of revolution)
	Rotating Degree of	
	Mold Board	360°(Angle of revolution)
	Circle drive	close type, worm wheel & pinion
	Blade Side Shift (L/R)	515 mm
	Blade Tilt Angle (L/R)	35°
	Blade Pitch Angle	Forward- 35° Backward 5°
DOZER	Blade Lifting Height	400 mm
	Blade Cutting Depth	350 mm
DOZER	Dozer Height	975 mm
	Dozer Width	16 mm
	Dozer Height above ground	435 mm

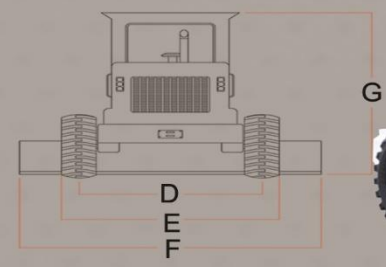
STEERING	Type	Power Steering
	Valve	Load sensing with Priority Valve
BRAKES	Service brake type	Disc (Foot Operated)
	Service brake actuation	Hydraulic Air assisted
	Parking brake type	Disk Brake Mounted on transmission drive shaft
		Mechanically Operated
HYDRAULIC SYSTEM	Main pump type	Fixed Displacement Gear Pump
	Max. pump flow rate	60 L/min
	Max. working pressure	200 bar
	Other Fetures	Load holding with pressure relief valves for lift and sensing cylinder
SERVICE CAPACITES	Fuel tank	200 L
	Engine Oil	13 L
	Engine Coolant	20 L
	Hydraulic Tank	130 L
	Transmission	15 L
	Middle Axle (Differential)	5 L
	Final drive (Rear Axle)	5 L

PRODUCTIVITY EVERYWHERE

OPERATING WEIGHTS	Operating weight	9100kg*
	On front axle	2500 kg
	On rear axle	6600 kg
TYRES	Tyre size	16./ 70 x 24 16 PR



DIMENSION (mm)	
A- Over all length	8700
B- Wheel base	5400
C- Mold board base	2100
D- Width front tyre centre line	1660
E- Width outside tyre	2066
F- Mold board standard width	3360
G- Over all height with cab	2940



ERGONOMICALLY DESIGNED AC CABIN
 Better visibility with rear view camera
 Adjustable steering Column
 Comfortable and adjustable seat



SPECIFICATION

FMG 180

ENGINE	Make	Ashok Leyland BSIV
	Model	H6C418022
	Aspirations	Turbo Charged
	Gross power	180 hp @ 2200 rpm
	Torque	700 Nm @ 1400-1700 rpm
TRANSMISSION	Transmission model	YD 13 (Power Shift Electronically Controlled)
	Max. travel speed (F)	44.9 km/hr
	Max. travel speed (R)	30.55 km/hr
	No. of speeds Forward	6
	No. of speeds Reverse	3
AXLE	Differential type	NO-SPIN Differential
	Final drive type	CHAIN DRIVE
	Wheel lean angle	±17 Degree
	Front angle oscillation	±15°
	Rear axle oscillation	±15°

MOLD BOARD	Mold board Tilt Angle	+ 13° - 45°
	Mold board Lift above ground	400 mm
	Max. slope angle	L / R 90°
	Blade max. depth in ground	500mm
	Circle diameter	1455mm
	Circle thickness	140mm
	Rotating Degree of Mold Board	360°(Angle of revolution)
Circle turn system	Covered	

STEERING	Steering configuration	Full hydraulic steering
	Steering relief pressure	15±1MPa
	Steering pump type	GEAR PUMP
	Minimum turning radius	7.5m
	Steering angle (Front Wheel)	±45°
Frame articulation angle	±20°	

BRAKES

Service brake type	Disc (Front)
Service brake actuation	Hydraulic
Parking brake type	Hub Brake
	Mechanically Operated
Parking brake actuation	Drum Brake

HYDRAULIC SYSTEM

Main pump type	Dual Pump
Main relief pressure	16±0.5MPa
Pump flow	70L/min

SERVICE CAPACITIES

Fuel tank	280L
Crank case	20L
Cooling system	30L
Hydraulic system	130L
Transmission & Torque convertor	28L
Tandem (Each Side)	23L
Final drive (Rear Axle)	28L

WORKING CAPACITIES

Maximum Draw pull	72kN
Cutting pressure	70kN

ERGONOMICALLY DESIGNED

AC CABIN

Better visibility with rear view camera
Adjustable steering Column
Comfortable and adjustable seat

THE ULTIMATE PERFORMER

OPERATING WEIGHTS

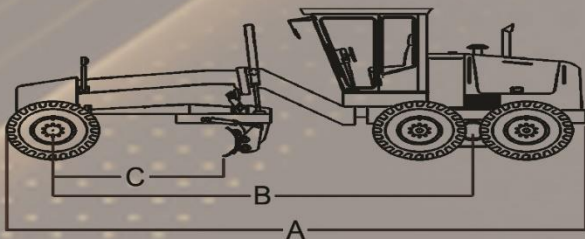
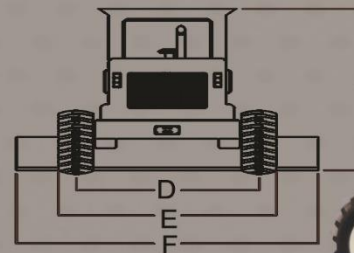
Operating weight	14500 kg
On front axle	4500 kg
On rear axle	10000 kg

TYRES

Tyre size	17.5-25 16PR
-----------	--------------

DIMENSION (mm)

A- Over all length	8500
B- Wheel base	5985
C- Mold board base	2380
D- Width front tyre centre line	2150
E- Width outside tyre	2600
F- Mold board standard width	3660
G- Over all height with cab	3400





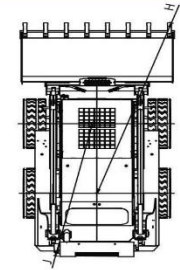
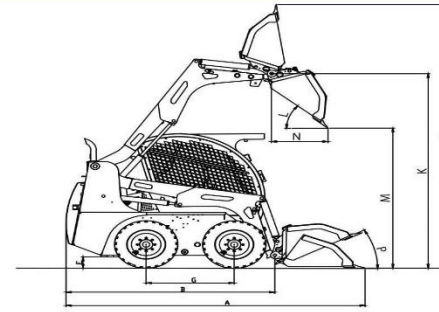
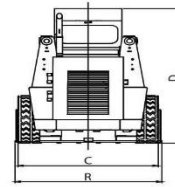
STYLISH **MULTI UTILITY**
POWERFUL **SPECIAL ATTACHMENT**
DESIGN **SAFETY**

SKID STEER LOADER



BS-III & BS-IV

HEMAN 175 SKID STEER LOADER



DIMENSIONS

	mm/deg
A - Length with bucket	3475 / 3621
B - Length without bucket	2570
C - Width with tyres	1650
D - Overall Height	2100
E - Ground clearance	190
F - Departure angle rear	26
G - Wheelbase	1023
H - Turning radius rear corner	2000 / 2134
J - Turning radius bucket corner	2680
K - Pin height	3022
L - Dump angle	40
M - Dump Height	2210
N - Reach at dump height	642
P - Roll back angle at ground	28
Q - Max reach at full height	4000
R - Bucket width (Standard)	1708

FEATURES

- Multi-disc parking brakes
- Gear drive
- Front cab access
- Fuel water trap
- Hydraulic parallel lift
- Adjustable seat
- Instruments audio/visual
- Instruments
- Dual element air cleaner
- Chassis-rigid fully welded high tensile steel structure
- Roof window for enhanced operating visibility.
- Rear window for emergency exit.
- Heavy duty gear boxes with slip-free gears.
- Axles of high ductile forgings, self lubricating.

Mechanical hitch for quick change of attachments.
 Ergonomically designed seat, user friendly controls.
 Visual and audio warning to prevent system failures.
 Adequate inbuilt safety measures for operator/machine.
 Hydraulic tilt back cabin for maintenance ease.
 Easy to maintain and service with normal tools.

TRANSMISSION

Hydrostatic 4X4 independent drive through
 Tandem variable displacement axial pumps
 Fixed displacement low speed high torque geroler
 motors
Final drive through positive gear boxes

TYRES

Front/ rear	10X16.5-10/8PR
Max. travel speed	13 kmph

SPECIFICATION

SAE Operating weight	2900/2965Kgs
Standard bucket capacity	0.40 / 0.46 cum
Maximum lift height	2955 mm
Time to raise lift arms fully	3-5 Sec.
Breakout force-bucket	1885Nm
Breakout force-lift arm	1445Nm

STANDARD FEATURES

- Auxiliary hydraulics
- Cab - swing up
- Tubeless tyres
- Key stop
- Lift arm stop
- Lifting eyes
- Working light
- Quick hitch
- Roof window
- Safety Seat belt
- Air Cleaner clog warning indicator
- Battery charge indicator
- Charge pump pressure
- Coolant temperature gauge
- Engine oil pressure
- Fuel level gauge
- Hour counter
- Hydraulic oil temperature gauge
- Cabin light
- Rear window for emergency exit
- Hydraulic clog indicator
- Fuel clog indicator
- Cab with front door lock
- Rear view mirrors
- Wiper motor with wiper blade
- Cabin fan
- Head lights with side indicators
- Tool kit
- 4 chamber tail lamps

HYDRAULICS

Engine driven gear pump with valve block, twin arms lift cylinder with end cushion and bucket cylinders.	
Flow (Liters per min)	80
Working pressure (bar)	175

ELECTRICALS

12 volts negative earth system with battery isolator	
Battery	130AH/150 AH
Low maintenance alternator	35 / 65Amp
Starter motor	12 V

BRAKES

Service brake: Hydraulically activated and released multi plate Fade free breaks from integral part of drive motors.
 Parking Brake: Electrically activated

CAPACITIES

Fuel system	62 Liters
Engine lube oil	8.5 / 9.0 Liters
Engine coolant	16 Liters
Transmission	14 Liters
Hydraulic system	70 Liters

PERFORMANCE

Rated operating capacity	600-750 Kgs
Tipping load	1200-1500 Kgs

ENGINE

BS III Model
 Simpson S433 Industrial BS III, 35.79kW/ 48HP/ 48.67PS @2200rpm, 4 Cylinder, Liquid Cooled, Diesel Engine, Naturally Aspirated
BS IV Model
 Simpson SJV436 Industrial BS IV, 54kW/ 72.5HP / 73.5PS @2200rpm, 4 Cylinder, Liquid Cooled, Diesel Engine, Turbo Charged Intercooled

ATTACHMENTS

- 6 IN 1 Bucket
- Sweeper collector
- Ripper tooth
- Backhoe
- Excavator Bucket: 300mm,450mm,600mm & Ditch Cleaning bucket.
- Pallet Forks
- Industrial grapple
- Rock breaker
- Snow blower
- Steel tracks(Track over tyres)
- Rubber tracks (Track over tyres)
- Post hole borer/ Auger
- Shredder
- Snow Blade
- Stump Grinder
- Trencher
- Side Tip Bucket
- High Tip Bucket

OPTIONAL

Heavy duty tyres/ Solid tyres -Tubeless
 Buckets: Varying capacities upto 0.65 cum limited to machine rating operating capacity.
 Servo Variant also available

Note : All dimensions are variable within ± 1.5%. VAEPL reserves the right to change specifications without prior notice

FYN Technologies Private Limited
 Fine Centre, Behind Shroff's Srushti, Off Mumbai - Bangalore Highway, Mhalunge, Pune 411045, INDIA.
MOB: 830 82 88 600 , 93 264 399 21
 E: info@fynpl.com W: www.fineequipment.net

Authorised Dealer:

LIGHT TOWER



**FLT
350**



SPECIFICATION	FLT 350
RATED POWER in KW	5.0
LUMINAIRES	
Type of Light	LED
Wattage	4 No'S X 350 W
Total Lumens Output	196000 Lumens
Lumens per Watt	140 Lm/W
Light Coverage in Square Meters	5400 Sq m
DIESEL ENGINE	
Engine Make	KOHLER
Engine Model	KD441
Engine Horsepower (Continuous)	5.1
Engine Speed (RPM)	3000/ 3600
No. of Cylinders	1
Specific Fuel Consumption (Approx.)	245gm/kwhr
FUEL TANK	
Fuel Tank Capacity	80 L
Fuel Tank Run Hrs	80 Hrs
ALTERNATOR	
Alternator Make	NSM/ Stamford /Mecc Alte
Rated Output	5.0 kVA
Alternator Degree of Protection	IP23
Rating Voltage (Volt)	110/120/220/230 V
Frequency (Hz)	50 Hz/ 60Hz
MAST	
Type	Manual-Vertical / Telescopic Tilted / Foldable Operation Winch and Each Operation Interlocked,
Maximum Height (Metres)	8 m
Number of Mast Section	5 Nos
Mast Rotation	360 Degree with locking system & manual operation



FINE LIFTING SOLUTIONS

Truck Mounted Crane

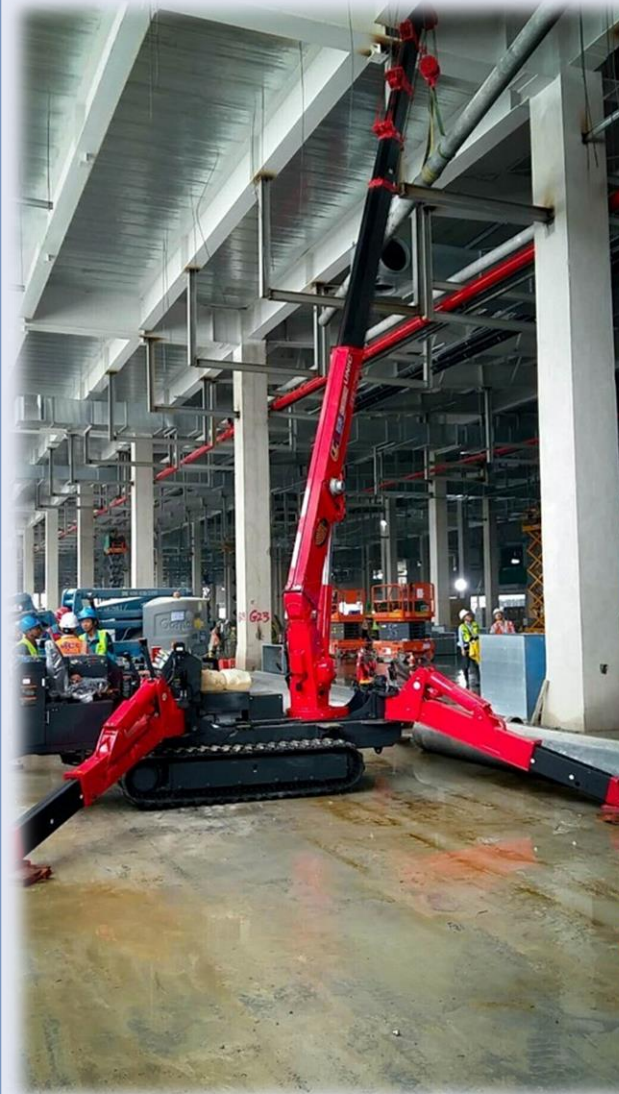
UNIC CRANES, BUILT FOR PERFORMANCE

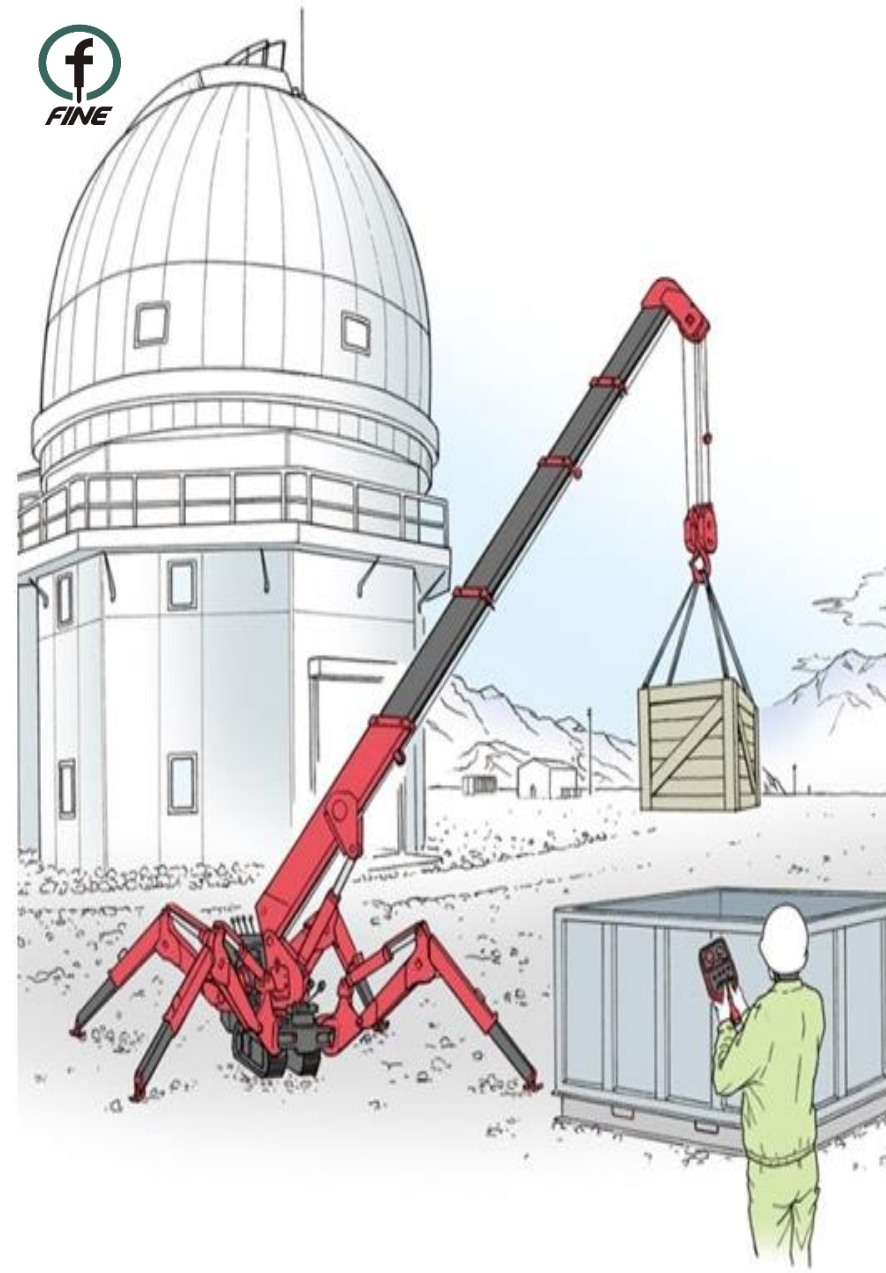
UNIC cranes are renowned for their mobility, rugged reliability and high productivity. Mounted on heavy-, medium- and light-duty trucks, these compact straight-boom (telescopic) cranes are the cranes of choice in Japan, where UNIC enjoys roughly 50% market share. Manufactured to the highest standards in design, durability and safety, UNIC cranes ensure optimum performance on the worksite. Whether truck-mounted or stand-alone, such as the mini crawler crane, all UNIC cranes offer the same characteristic advantages.

Mini Crawler crane

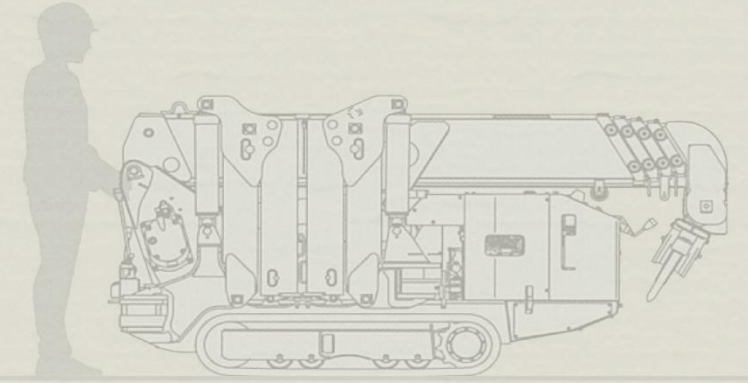
FINE UNIC mini-crawler crane is incredibly compact and useful lifting equipment. Its excellent accessibility and flexibility have been globally accepted.

UNIC mini-crawler crane is perfect lifting equipment that enables to meet wide variety of applications and ideal tools to support lifting works wherever access is restricted or working space is confined. Its excellent accessibility and flexibility will make many labour-intensive lifting operations be easier, safer and faster.





MINI CRAWLER CRANES



Crane Model	Fuel (Option)	Max Lifting capacity (t @ m)	No of Boom (#)	Min - Max Outreach (m)	Max Hook Height	Max Boom Angle	Outrigger Span (m)	Hydraulic Tank Capacity	Mass (kg) (Electric)	Dimensions (mm) (electric)		
										Width	Height	Length
UR-W094C P2E	Petrol	0.995 @ 1.5	4	0.15 - 5.17	5.6 m	78°	3.34 X 3.21	17 liters	1000	595	1290	1870
UR-W295C P2	Petrol (Electric)	2.93 @ 1.4	5	0.45 - 8.41	8.8 m	78°	3.88 X 3.93	27 liters	1850 (1980)	600	1375 (1430)	2690
UR-W295C 4	Diesel (Electric)	2.93 @ 1.4	5	0.45 - 8.41	8.8 m	78°	3.88 X 3.93	27 liters	1920 (2040)	600	1380 (1450)	2730 (2900)
UR-W295C B2A	Electric	2.93 @ 1.4	5	0.45 - 8.41	8.9 m	78°	3.86 X 3.91		2350	690	1525	2720
UR-W376C 4	Diesel (Electric)	3.03 @ 2.5	6	0.62 - 14.45	14.9 m	80°	4.56 X 4.44	75 liters	3870 (4020)	1300	1805	4340
UR-W546C 4	Diesel (Electric)	4.05 @ 2.5	6	0.66 - 15.52	16.0 m	80°	5.90 X 5.94	75 liters	4930 (5080)	1380	2035	4870
UR-W547C 4	Diesel (Electric)	4.05 @ 2.5	7	0.80 - 17.83	18.2 m	80°	5.90 X 5.94	75 liters	5070 (5220)	1380	1980	4950
UR-W706C 4	Diesel (Electric)	6.05 @ 3.0	6	0.51 - 18.60	19.5 m	80°	6.55 X 6.46	125.7 L	7990 (8140)	1670	2190	5610
UR-W1006C 2E-1	Diesel (Electric)	10.14 @ 3.0	6	0.04 - 21.93	22.8 m	80°	6.66 X 7.06	215 L	13840 (14020)	2000	2460	6060



WALK BEHIND VIBRATORY ROLLER

The FIV 6500 is a duplex vibrating roller, ideal for compacting soil & asphalt. The machine is fully hydraulic which allows a small overhang enabling the roller to run close to obstructions i.e. walls. It is equipped with a water sprinkler, operating handle and hydraulic livers. The machine would be supplied with an electric starter as well as rope starter.

HIGHLIGHTS

- Kohler KD 441 Engine
- Hydraulic system for reliable operation and excellent maintenance.
- Travel motor with improved durability.
- Safety design that the engine can only be started when the travel lever is in the neutral position.
- Specially Designed LED light for Night Operations
- Electric Start for quick and smooth starting.
- Special Designed air filter to extend engine life and reduce maintenance.
- Single-point lifting hooks for easy loading and unloading.

FINE EQUIPMENTS

Raising benchmarks of after sales support



FINE Walk Behind Vibratory Roller **fiv6500**



- ✓ KOHLER KD 441 ENGINE
- ✓ EASY TO OPERATE & TRANSPORT
- ✓ FULLY HYDROSTATIC
- HIGHLY EFFICIENT & RELIABLE
- PAN INDIA ON-SITE SUPPORT
- SPECIALLY DESIGNED LED LIGHT FOR NIGHT OPERATION

Operating Data - fiv 6500

Basic Weight	780Kgs	Gradability	38%
Drum Width	650mm	Engine Capacity	10HP
Centrifugal Force High	24kN	Operating Performance	7.4kW @2600 RPM
Centrifugal Force Low	14kN	Tank Capacity Fuel	5 LTR-Diesel
Frequency Vibration	64Hz	Tank Capacity Water	35LTR
Amplitudedrum	0.50/0.25 mm	Fuel Consumption l/h Avg	1.2L
Travel Speed -Maximum	5.90 km/hr	Travel Speed -Minimum	2.50km/hr

APPLICATIONS

- ✓ Hilly terrains with sharp bends
- ✓ Culverts
- ✓ Edges of highways
- ✓ Parking lots
- ✓ Internal Roads in Housing on soil
- ✓ Construction / Repair of roads
- ✓ Private Roads
- ✓ Playgrounds
- ✓ Granular and Asphalt etc.
- ✓ Gardening
- ✓ Pavements
- ✓ Compaction Canals
- ✓ Road Widening Works
- ✓ Embankments



FINE MULTI UTILITY MACHINE



The Fine Mini Dumper and Mixer: a game-changing tool revolutionizing construction efficiency. Designed for easy operation by semi-skilled workers, its compact build excels in tight spaces and tough terrains. With cutting-edge tech for self-loading/unloading, it slashes manual labor and time. Versatile in handling diverse materials, it boosts worksite safety and operator comfort with smart controls. Incorporating the Mini Dumper means amplified productivity, smoother material transport, and fewer delays, translating to significant cost savings and faster project completions. Experience unparalleled construction efficiency with the Fine Mini Dumper and mixer.

USES OF THE FINE UTILITY MACHINE - DUMPER AND MIXER

- Material Transport
- Site Logistic
- Debris Removal
- Landscaping
- Renovation
- Urban Projects
- Infrastructure
- Demolition
- Small-Scale Builds
- Landscaping
- Remote Sites
- Compact Areas
- Custom Mixes
- Commercial Ventures

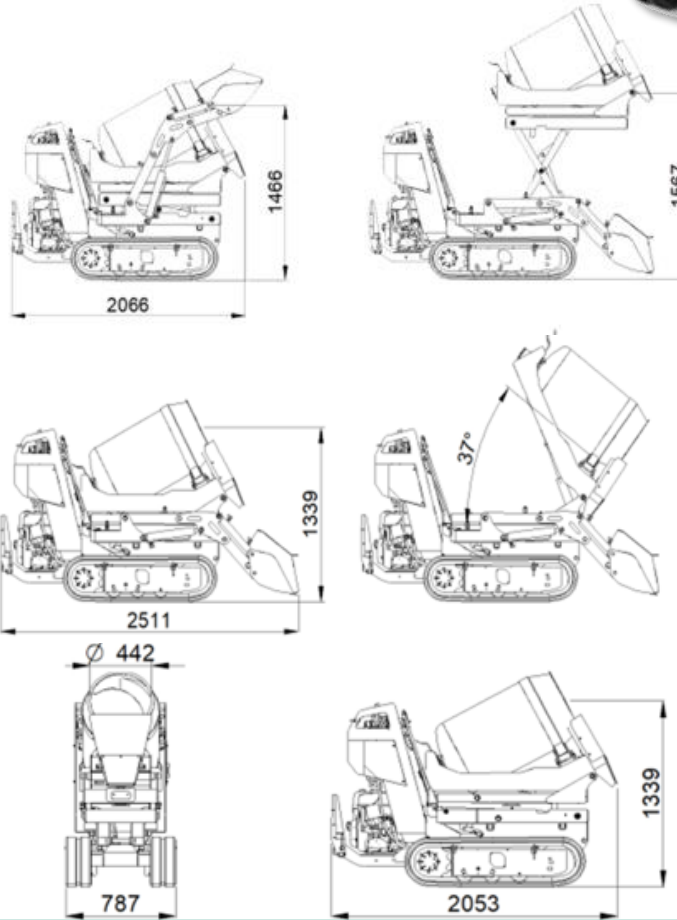


The Fine Mini Utility Machines are compact, versatile, and essential for diverse construction needs.

FINE MULTI UTILITY MACHINE

GENERAL SPECIFICATION

Model	MU01
Engine	Honda GX390, 11.7hp
Fuel tank capacity	6.1 litre
Working pressure	180
Drive Type	Hydrostatic
Machine Type	Rubber Track mounted
Hydraulic oil tank	23 litre
Limited grade ability	50% (26 degree)
Travelling speed	Upto 4 kmph



MU01+CM01

M/c Weight	950 kg
Drum Volume	150 ltr.
Output Capacity	1.8 CuM
Max Speed	4.0 km/h

MU01+CM01A

M/c Weight	900 kg
Drum Volume	150 ltr.
Output Capacity	1.8 CuM
Max Speed	4.0 km/h

MU01+CM01B

M/c Weight	850 kg
Drum Volume	150 ltr.
Output Capacity	1.8 CuM
Max Speed	4.0 km/h

OTHER COMPACT MACHINES



Concrete Cutter

Plate Compactor



Tamping Rammer



Power Trowel



FINE CONCRETE DIVISION

LIEVERS HOLLAND

Poker Vibrator
High Frequency Converter
Vibrating Beam & wet Screed
External Vibrating & Vibrating Table

OLI

Industrial Vibrator
Concrete Consolidation
Flow Aide

INVICTA

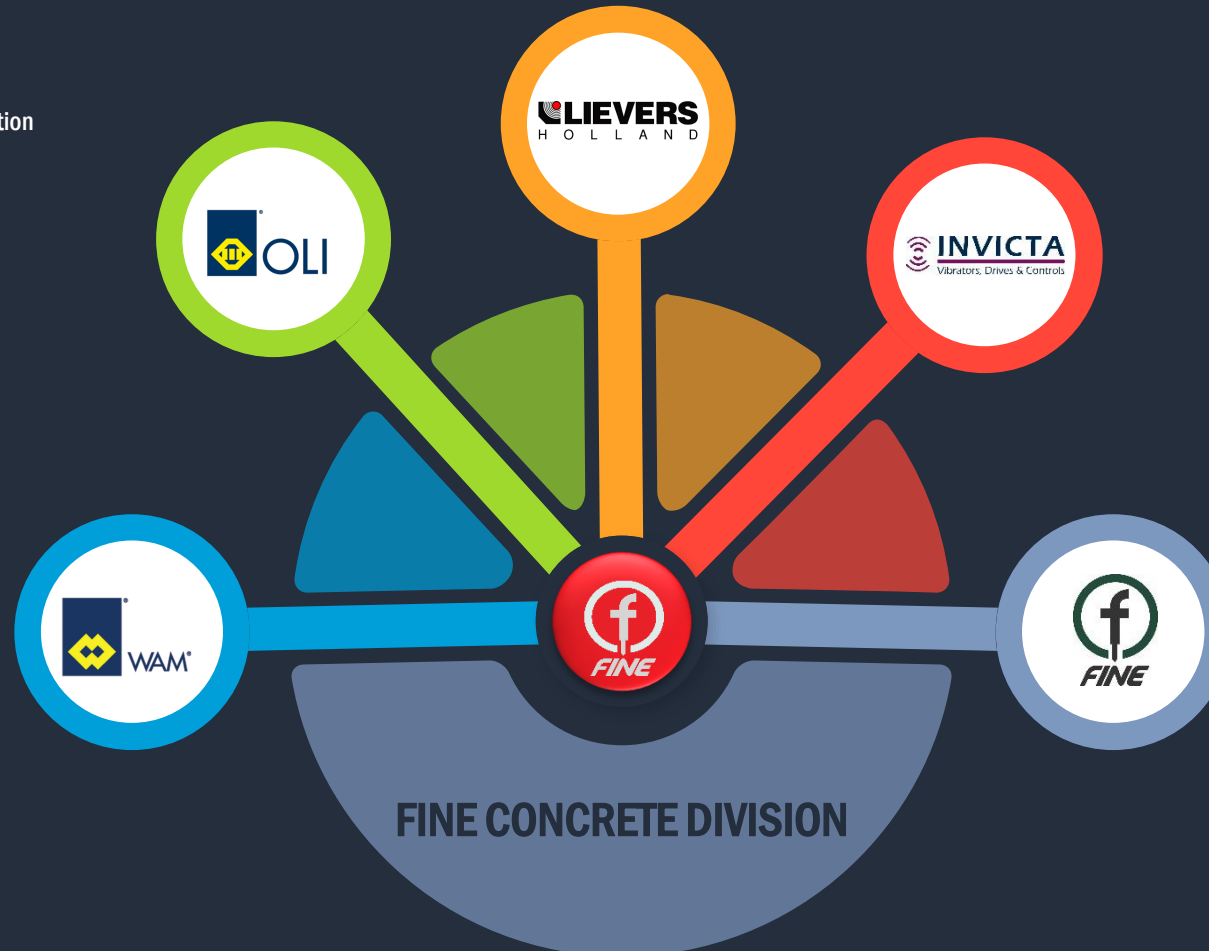
Electric Vibrator
Hydraulic Vibrator
Pneumatic Vibrator

WAM

Screw Conveyors
Dust Collector
Vibrator & Flow Aids
Pneumatic Acuter
Bulk Solid Discharge
Waste Water Treatment

FINE

High Frequency Needle
Vibrator
Converter





- Fine concreted division started in year 2018 to provide best quality product under value for money concept with top notch service. our dedicated department equipped with great stock and manpower to serve all needs immediately.

Product Portfolio

Vibrator complete Range
Shutter Vibrator
Bulk Material handling
Mechanical needles
High Frequency Convertors

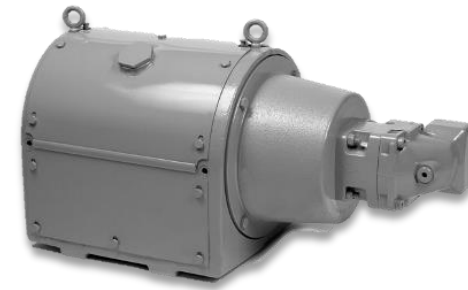




Invicta Vibrators is a division of Grantham Engineering Ltd., a company founded in 1946 specialising in electrical engineering. Our founder, Sidney Pask, recognised a requirement in the market for high quality industrial vibrators. In 1958 he established the division of Invicta Vibrators, dedicated to the design and manufacture of electrical, pneumatic and hydraulic vibrator motors for the material handling and process industries.

Product Portfolio

- Electric Vibrator
- Hydraulic vibrator
- Pneumatic Vibrator

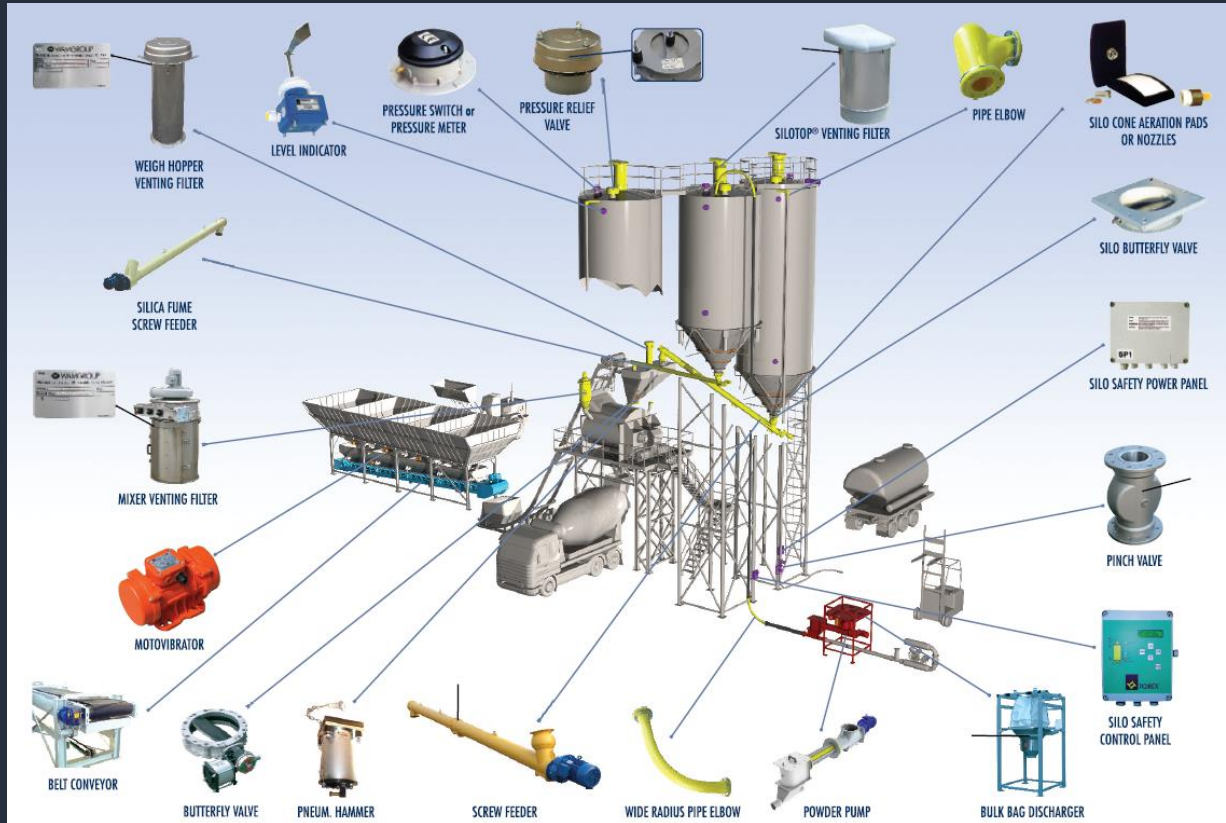




The Italian WAMGROUP, worldwide leader in developing and manufacturing equipment and plant components for bulk solids handling and processing, has been represented in India by its own subsidiary since 1996. Apart from being responsible for distribution of the WAMGROUP product range in India, Sri Lanka, Bangladesh and Nepal, WAM India is the Group's manufacturing hub for the subcontinent. It is the goal of WAM India to provide a vast customer base with attractively priced products in industrial quality, specifically tailored to the different needs of a variety of industries. Customer satisfaction through professional advice, comprehensive service and constant availability backed up by a vast stock of equipment and spare parts are an expectation WAM India is ready to fulfil day by day.

Product Portfolio

- Screw Conveyors
- Dust Collector
- Vibrator & Flow Aids
- Pneumatic Acuter
- Bulk Solid Discharge
- Waste Water Treatment





- OLI is the world's top selling manufacturer of Electric and Pneumatic Vibrators.
The high level of customer service is guaranteed by 20 OLI Trading Subsidiaries, 36+ local warehouses and 3 manufacturing plants worldwide.
- **WHEN YOU NEED IT, WHERE YOU NEED IT**
The key centrepiece of OLI's business strategy is rapid stock delivery, any time, any place in the world.

Product Portfolio

- Concrete Vibrator
- Industrial Vibrators
- Flow Aids





LIEVERS HOLLAND partner for concrete solutions

For more than 60 years, LIEVERS HOLLAND has been the leading international specialist in the field of on-site and industrial concrete processing.

Concrete is by far the most applied building material in the world. For good reasons: concrete is durable, strong and economical, provided that its composition is right and it is processed properly. Optimal processing requires know-how and the use of the right machines. LIEVERS HOLLAND offers exactly the expertise, machines and service that professionals require for delivering high-quality concrete efficiently and safely.

Product Portfolio

- Poker Vibrators
- High frequency converters
- Vibrating beams and wetscreeds
- Power trowels
- External Vibrators and vibrating tables



SURFACE PREPARATION EQUIPMENT



Trelawny SPT Ltd is the surface preparation specialist part of the Indutrade Group, Sweden. Manufacturer of pneumatic tools and surface preparation equipment in the engineering heart of the UK, Leamington Spa. Established over 60 years ago, Trelawny has been offering a range of equipment for preparing concrete, steel and stone.

NEEDLE SCALER



Removal of coatings, corrosion and other accumulated materials
Slag removal and stress-relieving welds
Cleaning mixers, formwork and machinery

DECK HAMMER



Fast removal of coatings and corrosion on ship and platform decks
Concrete scabbling and preparation
For Gas Ex Zone Applications on rigs, petrochemical plants, pipelines, vessels and shipyards

SCARIFIER



- Removal of thick coatings, rust and other accumulated materials
- Cleaning gas lines in preparation for inspection and repair.
- For Gas Ex Zone Applications on rigs, petrochemical plants, pipelines, vessels and shipyards
- For Dust Ex Zones Applications such as cleaning machinery in processing industries where dust and powders are present

LIGHTING SOLUTIONS



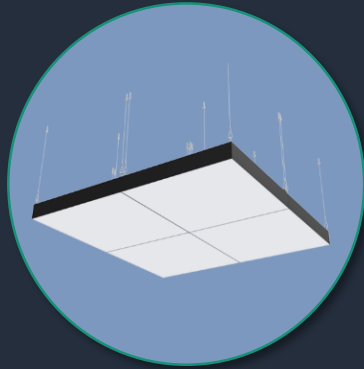
Wipro Lighting, a part of Wipro Consumer Care and Lighting Group was started in 1992 to manufacture and market lighting products. Today Wipro Lighting is one of the leading names when it comes to thought and reliability in the country's LED lighting industry.



Outdoor



Industrial



Indoor



**Oil & Gas
Flame Proof**



FINE EQUIPMENTS INDIA PVT LTD.

Head Office

Fine Centre, Behind Shroff's Srushti,
Off Mumbai - Bangalore Highway, Mhalunge,
Pune 411045. INDIA.

Factory

Plot No.7 , Gat no. 457 & 458, Shindewadi,
Tal, Khandala, Shindewadi, Satara - 412801,
Maharashtra - INDIA

Tel: +91 20 2980 8962

M: +91 83082 88600

Email: info@fineequipment.net

Web: www.fineequipmet.net

